



HK Hydraulik GmbH
Langenberger Str. 436
45277 Essen
Germany

Tel. +49 201.8 58 13-0
Fax +49 201.8 58 13-33
info@hk-hydraulik.de

www.hk-hydraulik.de



Your hydraulic partner

Restoring
24 h service
Installation
Project planning
Spare parts
New parts





Over 20 years' experience in overhauling

Our customers from over 30 countries around the globe include major automotive manufacturers and their suppliers, steel companies, foundries and rolling mills, construction machine manufacturers, the glass-processing industry, public utilities and disposal companies, companies engaged in traffic engineering and shipping as well as agriculture and forestry.

With one of the most efficient test benches in the industry, after overhauling, we can test virtually 100% of all the pumps and motors used world-wide. Our certified company is owner-operated and employs over 20 highly motivated employees. For many years, we have been recognised by the German Chamber of Industry and Commerce (IHK) as a company that takes on apprentices and we are actively involved in the specific training of young people.

Wherever oil flows through machines and systems, you can count on our expertise. For some 20 plus years, we have specialised in the overhauling of hydraulic pumps, motors, cylinders and valves in addition to other services spanning all aspects of hydraulics.

We are your hydraulic partner.



As a certified company, we offer you everything from a single source - namely, from the overhauling to the maintenance, servicing, planning and project planning through to the design and production. Upon request, we will provide you with a full on-site service. We supply you with new parts, spare parts and offer you complete exchange programmes.

Though our hydraulic services are non-proprietary, our overhauling and inspection services are always conducted according to the directions of the particular component manufacturers. Therefore we only use genuine parts for repairs. This means that both you and we can be sure with regard to compatibility and warranty.

What is more, we not only provide you with a 12 month period of warranty after commissioning, but also offer you a complete, value-for-money hydraulic service. Go ahead and test us out!

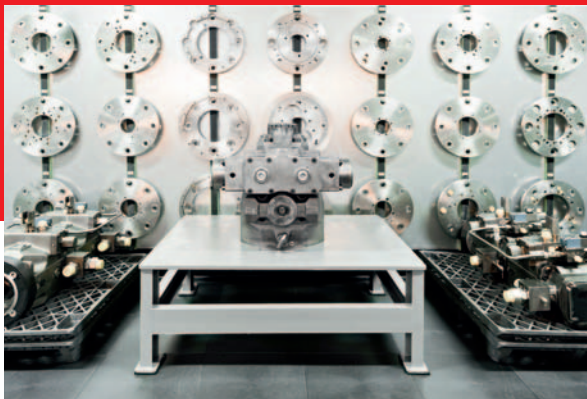
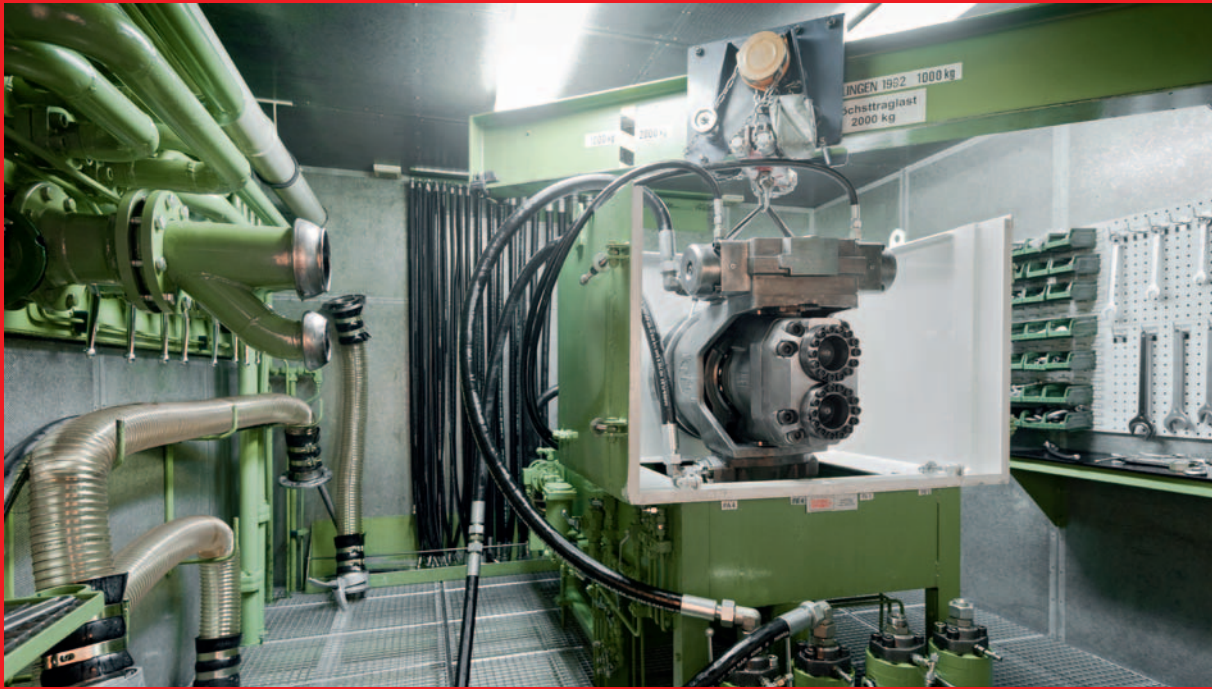


Hydraulic test bench for almost 1,000 types

Which pump would you like to have overhauled?
The A2V1000 or the CV900 from Brueninghaus?
Or perhaps the A4VG from Hydromatik?
No problem – we are your hydraulic partner
for pumps, motors, cylinders, valves, filters and
receivers from almost 100 manufacturers the
world over.

The name of your manufacturer does not
appear on the list? If so, please call us. You
can be sure that we can be of assistance to
you and that we can overhaul your hydraulic
motor or your hydraulic pump, cylinders or valves.

**Allweiler, Atos, Barnes, Bosch Rexroth,
Brueninghaus, Bucher, Casappa, Caterpillar,
Cessna, Commercial, Daikin, Danfoss, Deni-
son, Dowty, Düsterloh, Eaton, Eckart, Eckerle,
Häggblunds, Hawe, Have InLine, Herion, HPI,
Hydac, Hydraulik-Ring, Hydrokraft, Hydro-
matik, Hydro-Gigant, Jahns Regulatoren,
Kawasaki, Komatsu, Kracht, Leistriz, Liebherr,
Linde, Lohmann + Stolterfoht, Mannesmann
Rexroth, Meiller, Moog, Orsta, Oilgear, Parker-
Store, Pleiger, Poclairn, Racine, Rexroth, Rollstar,
Salami, Sauer, Sauer-Danfoss, Staffa, Towler
Oilgear, Uchida, Ultra, Vickers, Voac, Voith,
Volvo, von Roll, Wepuko.**



Due to a wide range of custom adaptations, we are capable of testing virtually 100% of all hydraulic pumps and motors available on the market using our test bench.

What else is special about our test bench? Definitely the continuously variable speeds and different pressures that we can test. By way of illustration, we can also use our PLC-controlled test bench for checking closed, semi-closed and open hydraulic circuits, in addition to all types of immersed pumps.

Thanks to the precision measurement shaft of our test bench, we are able to calculate speeds and torques with a 0.1% degree of accuracy. We analyse the power input and output of your pumps, motors, cylinders and valves electronically, which are displayed as digital readings on the control panel screen of the test bench at all times.

The most important technical data: P max 256 kW, Qmax 1,000 L/min., p max 500 bar.



10,000 parts always in stock

Our warehouse keeps over 10,000 different parts in stock, which include all the standard makes and types, 150 replacement pumps and motors in addition to hydraulic components of older series. To deal with your requests quickly and efficiently, our IT system holds records of all the parts kept in our warehouse. What is more, we can also source any parts we do not have in stock for you at short notice.



Regardless of the make and type of the hydraulic equipment you use, our service staff are fully conversant with the entire range and are available to our customers 24/7 – 365 days of the year.

24-hour hotline: +49 201.8 58 13-0



Downtimes are bad times. This is why we attach great importance to rapid and efficient customer service and offer you a 24-hour hotline. In case of an emergency, one call is enough to send our mobile service team on its way to you. Spare parts or new parts, tools or portable testing sets – after receiving your call, our service technicians load up their vehicles with everything they need for performing the task at hand. Each of our teams is equipped with a portable test bench, which allows all the important data of your system to be imported in digital form directly on site.

Our emergency number is: +49 201.8 58 13-0. Every emergency call made to this landline number after hours is forwarded directly to the mobile phone of one of our managers – also at night. He or she will then immediately organise the call-out of our mobile service team. For us, good service is always a matter for the boss!

Would you like to find out more about us? Do you have any questions about specific makes or types? Or do you require a quote? If so, please call us. We are looking forward to hearing from you.